

ROGERS

QNW HP Series

HIGH PRESSURE
Rotary Screw Air Compressors
60-300 HP
178-950 SCFM
150-200 PSIG



The Rogers QNW HP Series is a state-of-the-art, high pressure compressor for service applications requiring high pressure.

www.rogers-machinery.com



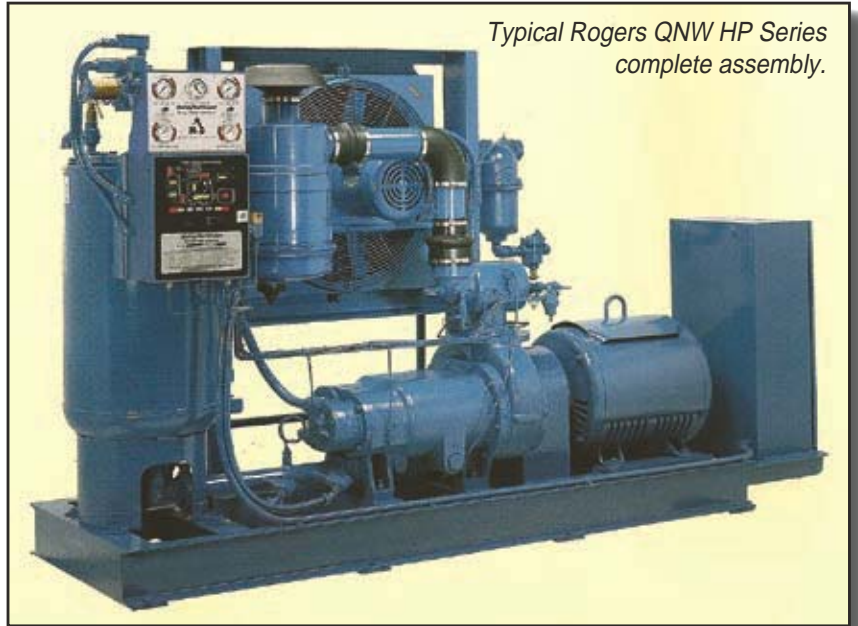
Inside the QNW HP Series

When your production requirements are critical, you need the rugged QNW Series high pressure compressor.

The Quincy Northwest HP Series compressor assemblies represent the best of lubricant-injected, single-stage, rotary screw technology.

The compressors are designed, assembled, and tested in our Centralia, Washington plant.

Electrical panels are CSA listed.



Typical Rogers QNW HP Series complete assembly.

Quality Assembly Works For You

Flexible Configuration

An example of simplicity and reliability, the QNW HP Series configuration is also flexible. An assembly can be customized to your specifications. Flange mounted air end available, except on models 238 and 1018.

Open Design

The open design of the QNW HP Series emphasizes function. The assembly is attractive and easy to inspect and service.

24-Hour Production

The QNW HP Series compressor has a rugged design, capable of operating fully loaded around the clock.

Rogers QNW Series Compressors Achieve The Lowest Energy Use In The Industry

Energy Efficient

High efficiency rotor design results in maximum air flow using minimum horsepower.

Air Capacity Display

Air capacity display is standard on all HP Series assemblies. This allows measurement of how much compressed air the plant uses, how much air is lost through system leaks, and how much capacity remains to be utilized.

HP Series Air Reheater (Optional)

Uses waste heat to improve air quality and quantity, improves overall compressor efficiency, and reduces cooling load consumption by 20%.

Oversized Heat Exchangers

Oversized heat exchangers, standard on all QNW HP Series assemblies, result in lower operating temperatures and reduced maintenance costs.

Air/Lubricant Separation

High-efficiency, five-stage air/lubricant separation results in less than 2 PPM(W) lubricant carry over into the plant air system.

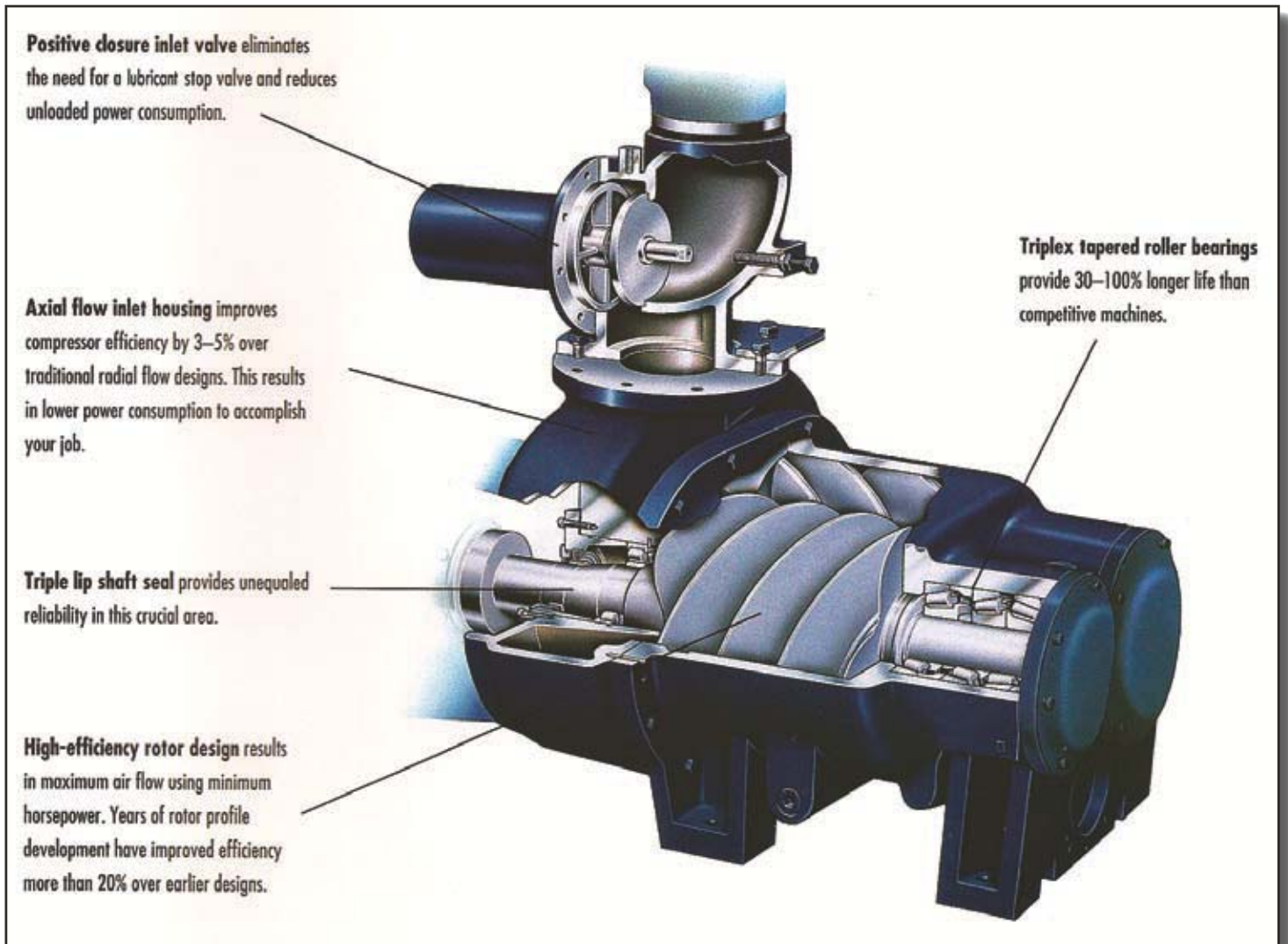
HP Series Air End

- Axial flow inlet (3—5% efficiency increase)
- No speed increasing gears (No parasitic losses)
- Precision rotor design and manufacture (3% efficiency increase)

Variable Speed Fan Drive Control (Optional)

Available on air-cooled models. Saves energy, reduces noise and prolongs equipment life.

QNW HP Series Air End is the Heart of the Compressor's Reliability



This Air End offers:

Triplex Bearings

The triplex tapered roller bearings are designed to ensure longer life. This superior three bearing arrangement consistently provides longer life than competitive machines.

Shaft Seal

The HP Series primary shaft seal is a triple-lip type design. This design is more reliable than a mechanical seal.

Lubricant

Rogers CLS46 Synthetic compressor lubricant provides extended lubricant life.

Slow Speed Rotors

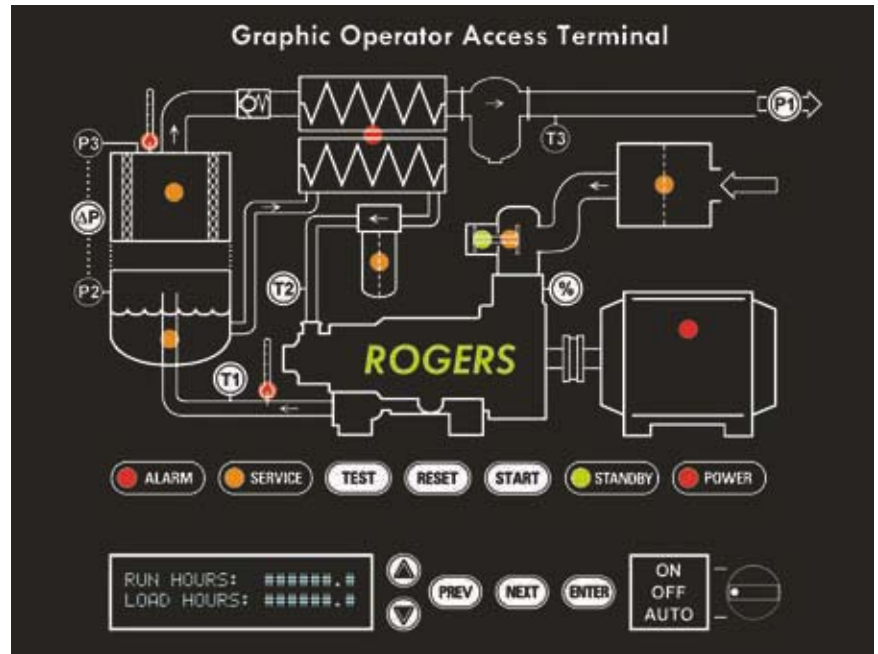
The male rotor is direct driven and non-geared. It runs at 1800 RPM motor speed (except QNW 238 which is 3600 RPM), maximizing efficiency and minimizing wear while performing at a low noise level.

Warranty

The HP Series 2 year air end and motor warranty is the best in the industry.

Graphic Operator Access Terminal provides state-of-the-art compressor control

The Rogers Graphic Operator Access Terminal is a microprocessor control designed to monitor, regulate, and protect the compressor. Sensors continuously transmit temperature and pressure information to the processor. This data allows the most efficient compressor operation, annunciation of proper service intervals and alarms, and initiates shut down due to abnormal operating conditions.



Easy To Use Control Panel And Message Display Provides Complete Compressor Control

LED Indicators Operating Status

- Power ON
- Standby (automatic operation)
- Service
- Alarm
- Compressor Operating
- Compressor loaded
- Compressor unloaded

Service, With Displayed Message

- Air inlet filter ΔP
- Separator element ΔP
- Lubricant Hours
- Lubricant filter ΔP

Pre-Alarm Warnings

- High air/lubricant temperature
- High aftercooler discharge temperature
- Drive motor overload
- Fan motor overload (air-cooled)
- Message Display— Operating

Message Display— Operating Information

- Percent of compressor capacity (%)
- Delivered air pressure (P1)
- Separator differential pressure (ΔP)
- Discharge air temperature (T1)
- Lubricant injection temperature (T2)
- Aftercooler discharge temperature (T3)
- Total running hours
- Total loaded hours

Service Information

- Hours until next service, date of last service
- Air inlet filter
- Separator element
- Lubricant
- Lubricant filter
- Drive motor bearings
- Historical list of service dates

Shutdowns

- High air/lubricant temperature
- High air temperature (P3)
- Drive motor overload
- Fan motor overload (air-cooled)
- Starter fault
- Reverse rotation shutdown

Operators— Selector Switch Legend Insert

- ON/OFF
- ON/OFF/AUTO
- LOCAL/OFF/REMOTE

Keypads

- START- Run compressor
- RESET- Reset alarm
- TEST- Test indicators
- % - Show compressor capacity
- P1- Show outlet air pressure
- ΔP - Show separator differential
- T1- Show compressor temperature
- T2 - Show lubricant temperature
- UP arrow - display control
- DOWN arrow - display control
- PREV - Navigate display messages
- NEXT- Navigate display messages
- ENTER - Accept set point

Diagnostics

- Microprocessor power indicator
- Processor input status - 16 LED's
- Processor output status - 8 LED's
- Test key enables battery power for off-line display of information



HP Series Equipment and Features

STANDARD EQUIPMENT AND FEATURES

All HP Series assemblies include the following equipment and features:

- Control system capable of maintaining system pressure with ± 2 PSI pressure differential
- Modulating inlet valve
- Heavy-duty fabricated steel base
- 1800 RPM motor, open drip-proof (Except Model 238)
- Jaw type wrap coupling
- OSHA type coupling guard
- Dual air/lubricant separator elements with scavenging sight glasses
- Spin-on full flow, 10 μ lubricant filters with internal bypass valve
- Air-cooled or water-cooled with automatic temperature control
- Heavy duty, multi stage inlet air filter/silencer
- Air or water-cooled aftercooler, separator and automatic drain
- SAE O-ring fittings on all lubricant pipe joints larger than 1/4 inch in diameter (drains not included)
- ASME pressure relief valve
- Constant speed control
- Discharge air check valve
- Solenoid operated blowdown valve with muffler
- Two high temperature shutdown devices
- Lubricant level indicator
- All major components manufactured and assembled in the USA
- CSA listed electrical panels
- Cast iron moisture separator with demand type drain valve
- CLS46 synthetic lubricant. Other lubricants available

OPTIONAL EQUIPMENT AND FEATURES

The following optional equipment and features are available on any HP Series assembly:

Energy Conservation

- Air reheater
- Premium efficiency motor
- Variable speed cooling fan drive (air-cooled only)
- Heat recovery

Compressor Control

- Low unloaded horsepower with time delay shutdown is the most adaptable control available to achieve energy savings
- Load/unload control
- Duty sequencer provides the most efficient control for multiple compressor installations
- Electrical control interfaces
- Variable speed control options available
- Motor starters — all types and voltages

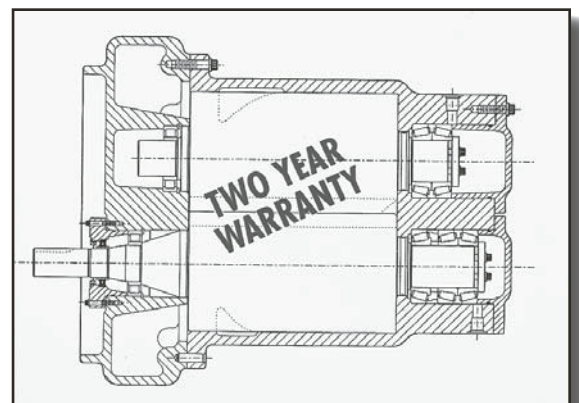
Additional Options

- Enclosure (partial or complete)
- Instrumentation and annunciation to meet your needs
- Pressure to 210 PSIG
- Remote run capability
- Auto restart after power failure
- Vertical discharge or remote cooler assemblies— Consult Factory
- Real time communication for compressor condition
- Air inlet pre-separation
- High ambient air-cooled coolers

**Contact Our
Sales
Department
With Your
Requirements**

We offer the best selection of high-quality equipment you'll find anywhere, with a full range of services to back it up.

If you notify us that you have an emergency and require a standard part or service for your Quincy Northwest compressor, we will ship the part and/or initiate the service within 24 hours or you will not have to pay for either.





HP Series Dimensions and Shipping Weights

QNW Model	Air-cooled Compressor Dimensions (inches)*			Shipping Weight	Water-cooled Compressor Dimensions (inches)*			Shipping Weight
	L	W	H**		L	W	H**	
238	88	42	63	3500	88	41	63	3350
248	92	42	63	3700	92	42	63	3550
308	103	48	68	4500	103	48	68	4350
377	103	50	68	4500	103	48	68	4350
378	103	50	68	4800	103	48	68	4650
508	105	50	78	5400	105	48	78	5200
608	114	50	90	5800	114	50	90	5600
757	114	50	90	5800	114	50	90	5600
758	114	50	90	6000	114	50	90	5800
1018	126	65	106	7800	126	63	106	7600

**Typical—do not use for construction ** Includes required clearance for removal of separator element*

Commitment to Quality and Service

The Rogers commitment to customer service is unequalled.

Engineering

Quincy Northwest rotary screw compressors are designed for all industrial users, large or small. QNW compressors are of the highest quality, efficiency and reliability.

Sales

Our experienced and professional sales staff will make recommendations based on your needs and specifications. The entire Rogers organization stands behind each recommendation, assuring everything will be done as requested.

Fabrication

Quincy Northwest compressors are assembled by expert technicians in our Centralia, Washington facility. These technicians interface directly with engineering, sales and application personnel involved with your order. This continuous communication at all levels is an important factor in delivering quality assemblies at the time you specify. Our quality inspectors check each assembly before shipment to ensure the equipment delivered meets your requirements.

Service

After your compressor has been installed, one of our field service technicians will visit your plant to:

- Check the installation
- Start the compressor
- Ensure proper operation
- Train your personnel
- Service compressor as needed
- Offer service agreements

Our Service Department is available 24 hours a day, 7 days a week. We will meet your needs quickly and expertly.

Reliability

There are good reasons why there are more Rogers QNW Series compressors in use in the Pacific Northwest than those from all other manufacturers combined. We would like to show you why.

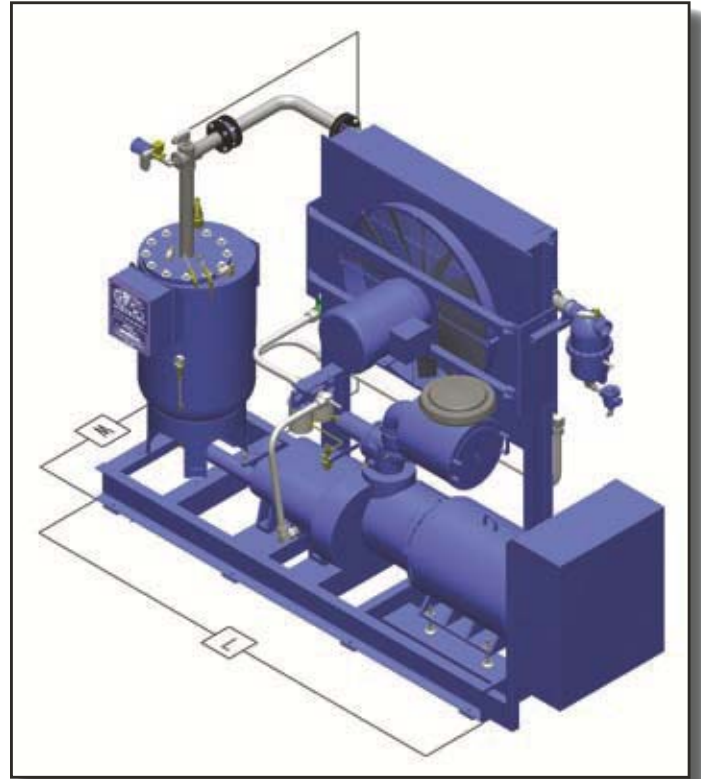


HP Series Performance Data*

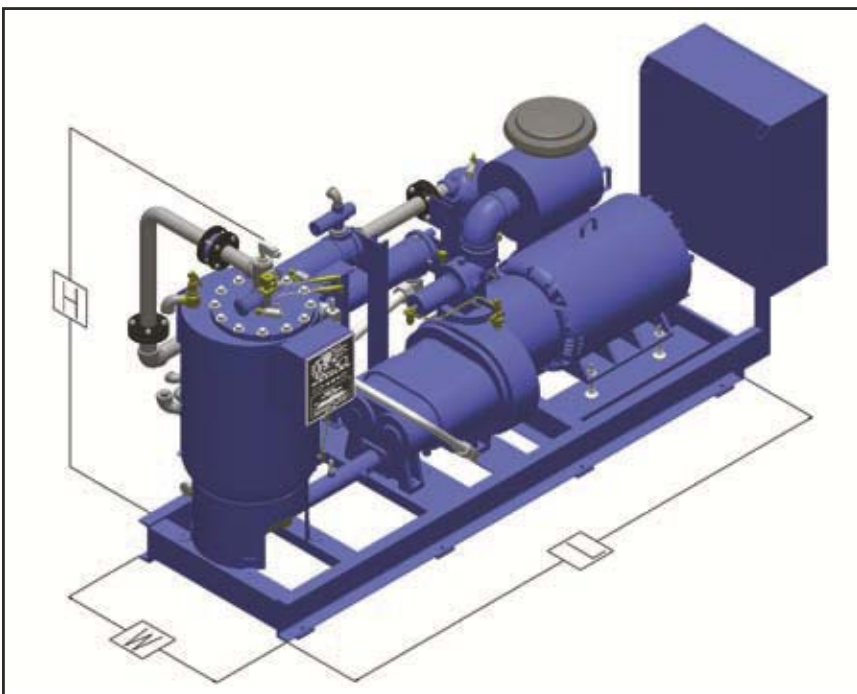
QNW Model	Capacity SCFM	Maximum Operating Pressure PSIG	Motor HP
238	178	200	60
248	225	200	75
308	259	200	100
377	352	180	100
378	348	200	125
508	468	200	150
608	558	200	200
757	727	180	200
758	711	200	250
1018	950	200	300

*Performance notes:
Capacities shown are at maximum operating pressure.

Air-Cooled Compressor



Water-Cooled Compressor

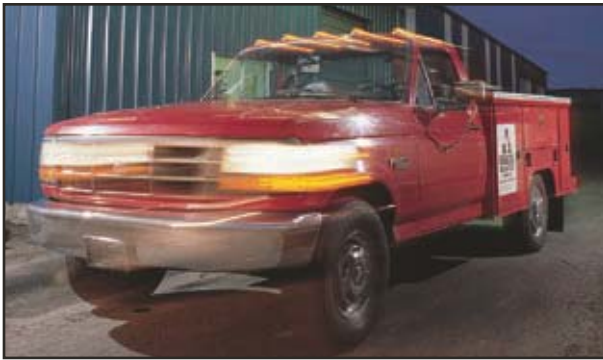


Service Support

SERVICE COMMITMENT

We have maintained a commitment to provide immediate service of the highest quality, for over 60 years. What does this mean to you? A reliable compressed air system backed by the largest parts inventory in the Pacific Northwest!

When you calculate the cost of down-time and distraction of key people, we believe you will realize you can afford the best. When you purchase a Rogers assembly, you receive our 24-hour emergency parts and service shipment guarantee.



OUR GUARANTEE

If you notify us that you have an emergency and require a standard part or service for your Rogers compressor, we will ship the part and/or initiate the service within 24 hours or you will not have to pay for either or both.

AVAILABLE ANYTIME

We have a fleet of service trucks fully equipped and staffed by experienced technicians. We can work on site and keep your downtime to a minimum.

WE OFFER:

- Start-up assistance
- Factory-monitored maintenance program
- Full factory service maintenance agreements
- Service reminder program
- Energy usage audits and energy saving equipment options
- User training classes held at our plant or customer site

FACTORY TRAINED TECHNICIANS

Our technicians receive year-round training. While specializing in servicing our air compressors, our technicians are trained to work on all system components, from air compressors and dryers, to blowers and vacuum pumps.

FULL SERVICE LOCATIONS

24 hours a day / 7 days a week.

- New and used equipment sales
- Repair and service
- Parts
- Rentals



**ROGERS
MACHINERY
COMPANY, INC.**

Since 1949

www.rogers-machinery.com
sales@rogers-machinery.com

OREGON

Portland

14600 S.W. 72nd Avenue 97224-7943
Post Office Box 232779
Portland, Oregon 97281-3279
Phone: (503) 639-6151
Fax: (503) 639-1844

Portland Corporate Office

14650 S.W. 72nd Avenue 97224-7943
Post Office Box 230429
Portland, Oregon 97281-0429
Phone: (503) 639-0808
Fax: (503) 639-0111

Eugene

725- B River Avenue
Post Office Box 41929
Eugene, Oregon 97404
Phone: (541) 461-5581
Fax: (541) 461-5640

WASHINGTON

Seattle

7800 Fifth Avenue South
Seattle, Washington 98108
Phone: (206) 763-2530
Fax: (206) 763-1187

Centralia

3509 Galvin Road
Post Office Box 548
Centralia, Washington 98531
Phone: (360) 736-9356
Fax: (360) 736-8630

Spokane

Spokane Industrial Park
16615 E. Euclid Avenue
Spokane, Washington 99216
Phone: (509) 922-0556
Fax: (509) 922-0910

CALIFORNIA

Eureka

3428 Jacobs Avenue
Eureka, California 95501
Phone: (707) 443-6388
Fax: (707) 442-1086

IDAHO

Nampa

715 North Kings Road
Nampa, Idaho 83687
Post Office Box 338
Nampa, Idaho 83653
Phone: (208) 463-1500
Fax: (208) 463-4100